

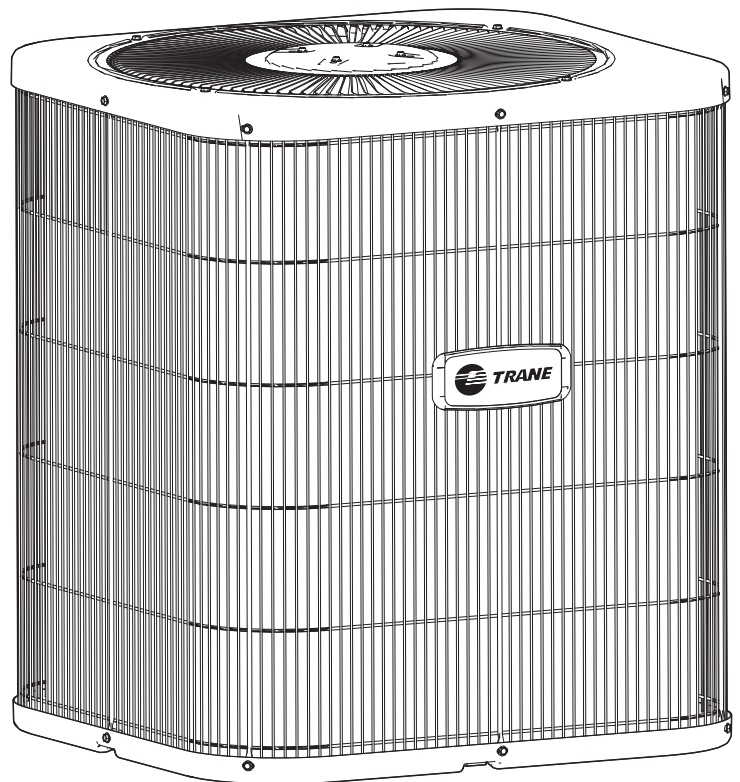


# Split System Cooling Product & Performance Data

---

**XB 300**  
**4TTM3018-060**

**1½ – 5 Tons**



---

**PUB. NO. 22-1841-05**



## Features and Benefits

---

- **Climatuff®** compressor
- All aluminum **Climatuff®** coil
- **WeatherGuard™** fasteners
- **Comfort"R"™** mode approved
- Glossy corrosion resistant finish
- Internal compressor high/low pressure and temperature protection
- 018, 024, 030, 036 and 060 ship with start kit
- Liquid line filter-drier supplied for field installation
- Anthracite gray cabinet
- High pressure switch
- R-410A refrigerant
- S.E.E.T. design testing
- 100% line run test
- Low ambient cooling to 60°F as shipped
- Low ambient cooling to 30°F with AY28X079
- Low ambient cooling to 0°F with BAYLOAM103
- **Extended warranties available**

# Contents

---

<b>Features and Benefits</b>	<b>2</b>
<b>General Data</b>	<b>4</b>
Product Specifications	4
Accessory Description and Usage	5
AHRI Standard Capacity Rating Conditions	5
<b>Model Nomenclature</b>	<b>6</b>
<b>Dimensions</b>	<b>7</b>
<b>Electrical Data</b>	<b>9</b>
<b>Mechanical Specification Options</b>	<b>11</b>



# General Data

## Product Specifications

Model No. ①	4TTM3018A1	4TTM3024A1	4TTM3030A1	4TTM3036A1
Electrical Data V/Ph/Hz ②	208/230/1/60	208/230/1/60	208/230/1/60	208/230/1/60
Min Cir Ampacity	10	12	16	18
Max Fuse Size (Amps)	15	15	25	30
Compressor	CLIMATUFF®	CLIMATUFF®	CLIMATUFF®	CLIMATUFF®
RL Amps - LR Amps	6.7 - 38.6	8.4 - 58	11.3 - 68.0	13.5 - 63
Outdoor Fan FL Amps	1.3	1.3	1.3	1.3
Fan HP	1/4	1/4	1/4	1/4
Fan Dia (inches)	19.12	19.12	19.12	19.12
Coil	CLIMATUFF®	CLIMATUFF®	CLIMATUFF®	CLIMATUFF®
Refrigerant R-410A	5/03-LB/OZ	4/11-LB/OZ	4/02-LB/OZ	4/5-LB/OZ
Line Size - (in.) O.D. Gas ③	5/8	5/8	3/4	3/4
Line Size - (in.) O.D. Liquid ③	3/8	3/8	3/8	3/8
Dimensions H x W x D (Crated)	32-3/8 x 24-3/4 x 26-3/4	32-3/8 x 24-3/4 x 26-3/4	32-3/8 x 24-3/4 x 26-3/4	32-3/8 x 24-3/4 x 26-3/4
Weight - Shipping	177	180	181	184
Weight - Net	156	159	160	163
Start Components	YES	YES	YES	YES
Sound Enclosure	NO	NO	NO	NO
Compressor Sump Heat	NO	NO	NO	NO
<b>Optional Accessories: ④</b>				
Evaporator Defrost Control Start Kit	AY28X079	AY28X079	AY28X079	AY28X079
Crankcase Heater Kit	BAYCCHT300	BAYCCHT300	BAYCCHT300	BAYCCHT300
Low Ambient Kit ⑤	BAYLOAM103	BAYLOAM103	BAYLOAM103	BAYLOAM103
Refrigerant Lineset ⑥	TAYREFLN9*	TAYREFLN9*	TAYREFLN7*	TAYREFLN7*
Extreme Conditions Mount Kit	BAYECMT021	BAYECMT021	BAYECMT021	BAYECMT021

① Certified in accordance with the Unitary Air-Conditioner equipment certification program which is based on AHRI Standard 210/240.

② Calculated in accordance with N.E.C. Only use HACR circuit breakers or fuses.

③ Standard line lengths - up to 60' Standard lift - 100' Suction and Liquid line.  
If OD unit is located above ID unit - up to 200' Lift - up to 200' Suction and Liquid line length.

④ For accessory description and usage, see page 5.

⑤ For applications requiring the BAYLOAM103, an 8 X 8 weatherproof electrical enclosure is required in order to locate the low ambient controller external to the unit.

⑥ \* = 15, 20, 25, 30, 40 and 50 foot lineset available.

# General Data

## Product Specifications

Model No. ①	4TTM3042A1	4TTM3048A1	4TTM3060A1
Electrical Data V/Ph/Hz ②	208/230/1/60	208/230/1/60	208/230/1/60
Min Cir Ampacity	27	29	35
Max Fuse Size (Amps)	45	50	60
Compressor	CLIMATUFF® - SCROLL	CLIMATUFF® - SCROLL	CLIMATUFF® - SCROLL
RL Amps - LR Amps	19.9 - 109	21.8 - 117	26.3 - 134
Outdoor Fan FL Amps	1.7	1.7	1.7
Fan HP	1/3	1/3	1/3
Fan Dia (inches)	23	23	23
Coil	CLIMATUFF®	CLIMATUFF®	CLIMATUFF®
Refrigerant R-410A	5/00-LB/OZ	4/13-LB/OZ	4/13-LB/OZ
Line Size - (in.) O.D. Gas ③	7/8	7/8	7/8
Line Size - (in.) O.D. Liquid ③	3/8	3/8	3/8
Dimensions H x W x D (Crated)	32-3/8 x 29-3/4 x 30-1/2	32-3/8 x 29-3/4 x 30-1/2	32-3/8 x 29-3/4 x 30-1/2
Weight - Shipping	190	191	194
Weight - Net	168	168	171
Start Components	NO	NO	YES
Sound Enclosure	NO	NO	NO
Compressor Sump Heat	NO	NO	NO
<b>Optional Accessories: ④</b>			
Evaporator Defrost Control	AY28X079	AY28X079	AY28X079
Start Kit	BAYSKT263	BAYSKT263	
Crankcase Heater Kit	BAYCCHT301	BAYCCHT301	BAYCCHT301
Low Ambient Kit ⑤	BAYLOAM103	BAYLOAM103	BAYLOAM103
Refrigerant Lineset ⑥	TAYREFLN7*	TAYREFLN3*	TAYREFLN3*
Extreme Conditions Mount Kit	BAYECMT021	BAYECMT021	BAYECMT021

## Accessory Description and Usage

**Evaporator Defrost Control** — SPST Temperature actuated switch that cycles the condenser off as indoor coil reaches freeze-up conditions. Used for low ambient cooling to 30°F.

**Rubber Isolators** — Use five (5) field supplied (1-1/2" maximum height) large rubber isolators (capable of withstanding the maximum weight of the unit) to isolate condensing unit from transmitting energy into mounting frame or pad. Use on any application where sound transmission needs to be minimized.

**Start kit** — Start capacitor and relay to assist compressor motor startup. Use in areas with marginal power supply, on long linesets, low ambient conditions, etc.

## AHRI Standard Capacity Rating Conditions

**AHRI STANDARD 210/240 RATING CONDITIONS** —  
(A) Cooling 80°F DB, 67°F WB air entering indoor coil,  
95°F DB air entering outdoor coil.





# Model Nomenclature

## Outdoor Units

### Refrigerant Type

2 = R-22  
4 = R-410A

### TRANE

### Product Type

W = Split Heat Pump  
T = Split Cooling

### Product Family

Z = Leadership – Two Stage  
X = Leadership  
R = Replacement/Retail  
M or B = Basic  
A = Light Commercial

### Family SEER

0 = 10    3 = 13    6 = 16  
1 = 11    4 = 14    8 = 18  
2 = 12    5 = 15    9 = 19

### Split System Connections 1-6 Tons

0 = Brazed

### Nominal Capacity in 000s of BTUs

### Major Design Modifications

### Power Supply

1 = 200-230/1/60 or 208-230/1/60  
3 = 200-230/3/60  
4 = 460/3/60

### Secondary Function

### Minor Design Modifications

### Unit Parts Identifier

4 T T B 3 0 3 6 B 1 0 0 0 A

## High Efficiency Furnaces

### Furnace Configuration

TU = Upflow / Horizontal  
TD = Downflow / Horizontal

### Type

D = 80% Premium  
X = 90% Premium

### Number of Heating Stages

1 = Single Stage  
2 = Two Stage  
3 = Three Stage

### Cabinet Width

A = 14.5" Cabinet Width  
B = 17.5" Cabinet Width  
C = 21.0" Cabinet Width  
D = 24.5" Cabinet Width

### Heating Input

080 = 80,000 BTUH

### Major Design Change

### Power Supply / Fuel

9 = 115 Volts / Natural Gas  
F = 115 Volts / Natural Gas with Integrated iFD Filter

### Airflow Capacity for Cooling

36 = 3 Ton Standard PSC Motor  
H3 = 3 Ton High Efficiency Motor  
V3 = 3 Ton Variable Speed Motor

### Draft Inducer Speeds

1 = Single Speed  
2 = Two Speed  
V = Variable Speed

### Minor Design Change

### Service Digit – Not Orderable

T U D 1 B 0 8 0 A 9 H 3 1 A A

## Air Handlers-Residential

### Refrigerant Type

4 = R-410A

### Application

TE = Fully Convertible  
TG = Semi Convertible  
TF = Front Return  
TB = Modular Blower

### Product Family

E = Leadership - Variable Speed  
H = High Efficiency  
C = Replacement/Retail  
B = Basic

### Flow Control

0 = No Flow Control  
3 = TXV-Non-bleed

### Feature Identifier

0 = Standard Unit  
F = Air-Tite™  
D = Integrated Whole Home Air Cleaner  
C = Communicating Air Handler

### Nominal Capacity in 1000's (BTUH)

### Major Design Change

### Power Supply

1 = Single Phase

### Electrical Connection

0 = Pig Tails  
B = Circuit Breaker  
D = Pull Disconnect

### Future Option - Factory Installed Heater Nominal KW Value

### Minor Design Change

### Service Digit - Not Orderable

1 2 3 4 5 6 7 8 9 10 11 12 13 14 15  
4 T E 3 F 3 6 A 1 0 0 0 A A

## Heat Pump / Cooling Coils

### Refrigerant Type

2 = R-22    4 = R-410A

### Product Family

T = Premium (Heat Pump or Convertible Coil)  
C = Standard (Cooling Only)

### Coil Design

X = Direct Expansion Evaporator Coil

### Product Family

C = Cased A Coil  
A = Uncased A Coil  
F = Cased Horizontal Flat Coil

### Coil Width (Cased / Uncased)

A = 14.5" / 13.3"    C = 21.0" / 19.8"    H = 10.5"  
B = 17.5" / 16.3"    D = 24.5" / 23.3"

### Refrigerant Line Coupling

0 = Brazed

### Nominal Capacity in 000s of BTUs

### Major Design Change

### Efficiency

C = Standard    S = Hi Efficiency

### Refrigerant Control

3 = TXV – Non-Bleed

### Coil Circuitry

H = Heat Pump  
C = Cooling Only

### Airflow Configuration

A = Upflow Only  
U = Upflow / Downflow  
H = Horizontal Only  
C = Convertible – Upflow, Downflow, Left Airflow  
M = Convertible – Upflow, Downflow, Left or Right Airflow

### Minor Design Change

### Unit Parts Identifier

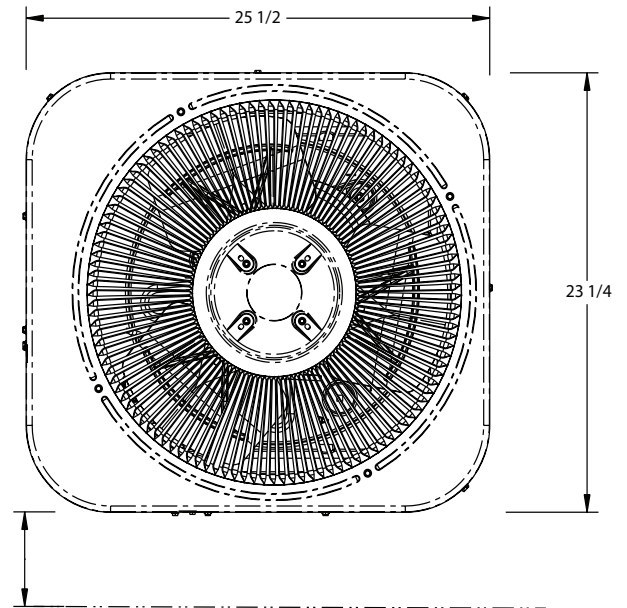
2 T X C B 0 3 6 A C 3 H C A A

# Dimensions

## 4TTM3 OUTLINE DRAWING

ELECTRICAL AND REFRIGERANT  
COMPONENT CLEARANCES  
PER PREVAILING CODES.

UNIT SHOULD BE PLACED SO ROOF  
RUN-OFF WATER DOES NOT POUR  
DIRECTLY ON UNIT, AND SHOULD BE  
AT LEAST 12" FROM WALL AND ALL  
SURROUNDING SHRUBBERY ON TWO SIDES.  
OTHER TWO SIDES UNRESTRICTED.



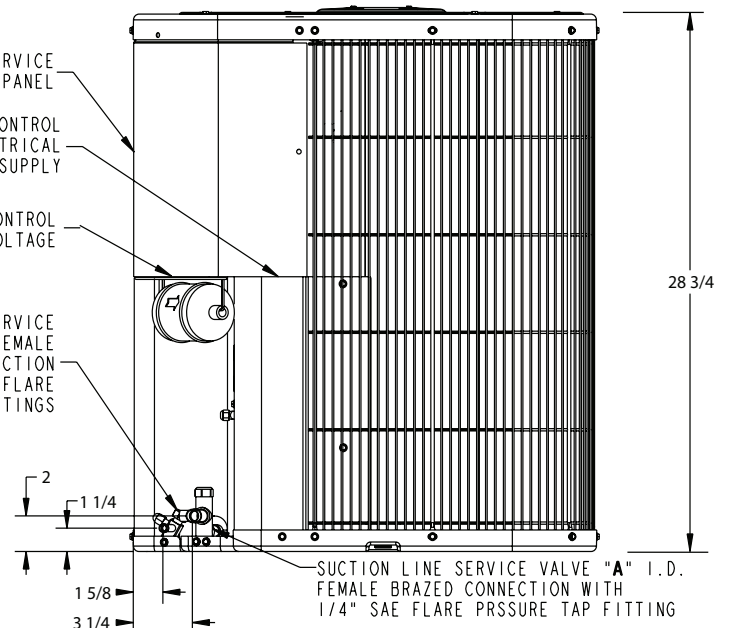
"A" (Suction Line Service Valve)	
4TTM3018A1000A	5/8
4TTM3024A1000A	5/8
4TTM3030A1000A	3/4
4TTM3036A1000A	3/4
4TTM3042A1000A	7/8
4TTM3048A1000A	7/8
4TTM3060A1000A	7/8

ELECTRICAL SERVICE  
PANEL

7/8 DIA. HOLE IN CONTROL  
BOX BOTTOM FOR ELECTRICAL  
POWER SUPPLY

1-5/8 DIA. HOLE IN CONTROL  
BOX BOTTOM FOR LOW VOLTAGE

LIQUID LINE SERVICE  
VALVE, 3/8 I.D. FEMALE  
BRAZE CONNECTION  
WITH 1/4" SAE FLARE  
PRESSURE TAP FITTINGS



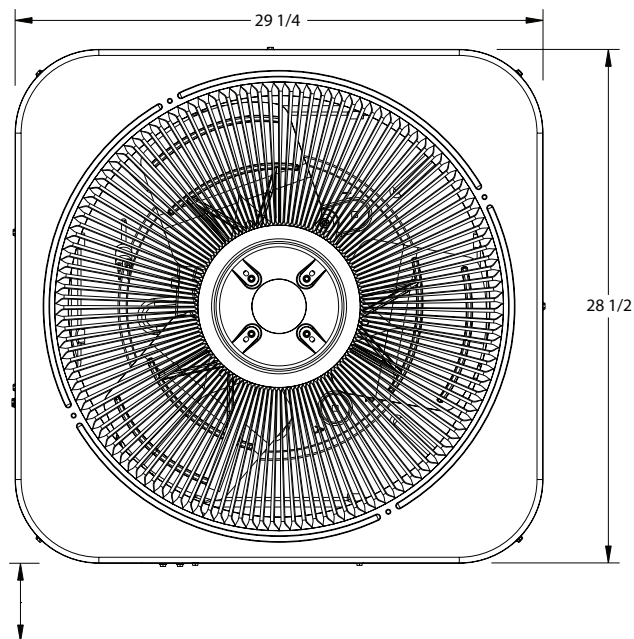
**BASE 2**  
**4TTM3018-036**

# Dimensions

## 4TTM3 OUTLINE DRAWING

ELECTRICAL AND REFRIGERANT  
COMPONENT CLEARANCES  
PER PREVAILING CODES.

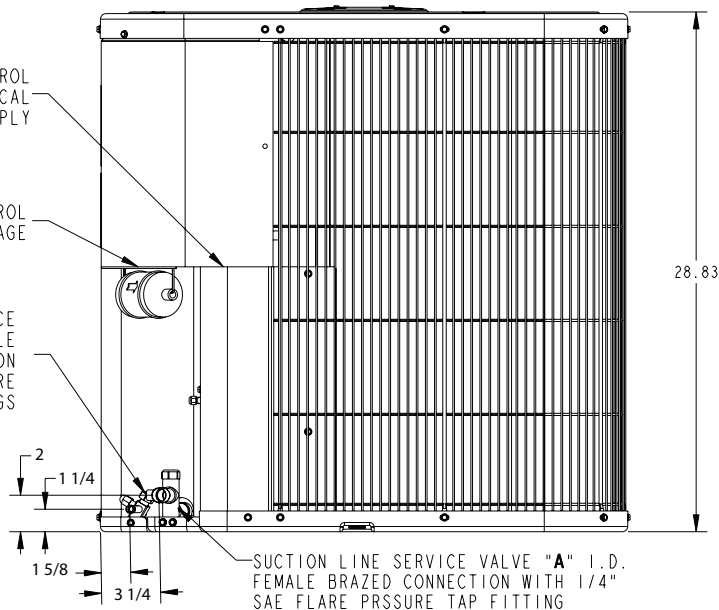
UNIT SHOULD BE PLACED SO ROOF  
RUN-OFF WATER DOES NOT POUR  
DIRECTLY ON UNIT, AND SHOULD BE  
AT LEAST 12" FROM WALL AND ALL  
SURROUNDING SHRUBBERY ON TWO SIDES.  
OTHER TWO SIDES UNRESTRICTED.



7/8 DIA. HOLE IN CONTROL  
BOX BOTTOM FOR ELECTRICAL  
POWER SUPPLY

1-5/8 DIA. HOLE IN CONTROL  
BOX BOTTOM FOR LOW VOLTAGE

LIQUID LINE SERVICE  
VALVE, 3/8 I.D. FEMALE  
BRAZE CONNECTION  
WITH 1/4" SAE FLARE  
PRESSURE TAP FITTINGS

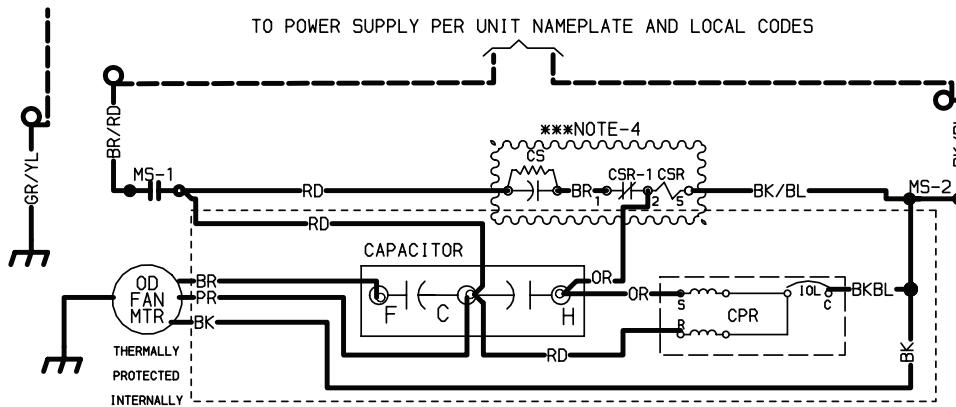


**BASE 3**  
**4TTM3042-060**

<b>"A" (Suction Line Service Valve)</b>	
4TTM3018A1000A	5/8
4TTM3024A1000A	5/8
4TTM3030A1000A	3/4
4TTM3036A1000A	3/4
4TTM3042A1000A	7/8
4TTM3048A1000A	7/8
4TTM3060A1000A	7/8

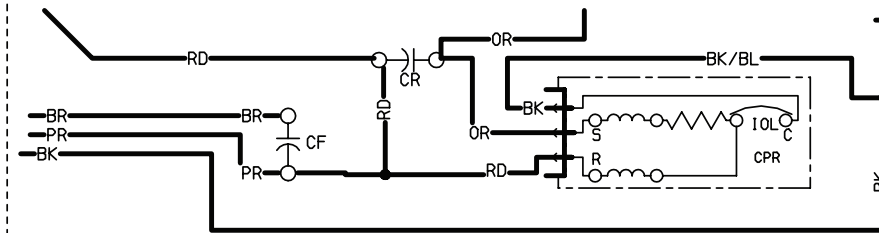


# Electrical Data



CF	FAN CAPACITOR
CN	WIRECONNECTOR
CPR	COMPRESSOR
CR	RUN CAPACITOR
CS	STARTING CAPACITOR
CSR	CAPACITOR SWITCHING RELAY
F	INDOOR FAN RELAY
HPCO	HIGH PRESSURE CUTOUT SWITCH
LPCO	LOW PRESSURE CUTOUT SWITCH
IOL	INTERNAL OVERLOAD PROTECTOR
SM	SYSTEM ON-OFF SWITCH
MS	COMPRESSOR MOTOR CONTACTOR
ODA	OUTDOOR ANTICIPATOR
OFT	OUTDOOR FAN THERMOSTAT
ODS	OUTDOOR TEMPERATURE SENSOR
ODT	OUTDOOR THERMOSTAT
SC	SWITCH OVER VALVE SOLENOID
TDL	DISCHARGE LINE THERMOSTAT
TNS	TRANSFORMER
TDR	3 MIN ANTI-SHORT CYCLE TIME DELAY RELAY

\* USED ON MODELS WITH 2 RUN-CAPS



COLOR OF WIRE  
BK/BL

COLOR OF MARKER

BK	BLACK	RD	RED	OR	ORANGE
BL	BLUE	WH	WHITE	GR	GREEN
BR	BROWN	YL	YELLOW	PR	PURPLE
PK	PINK				

## ⚠ WARNING

HAZARDOUS VOLTAGE!

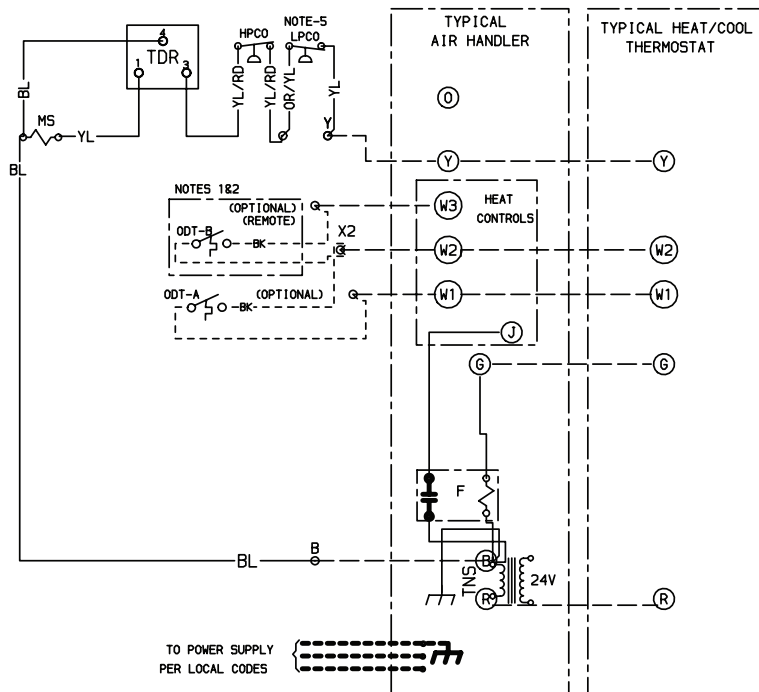
DISCONNECT ALL ELECTRICAL POWER INCLUDING REMOTE DISCONNECTS BEFORE SERVICING.

Failure to disconnect power before servicing can cause severe personal injury or death.

## ⚠ CAUTION

USE COPPER CONDUCTORS ONLY!

UNIT TERMINALS ARE NOT DESIGNED TO ACCEPT OTHER TYPES OF CONDUCTORS. Failure to do so may cause damage to the equipment.



NOTES:

1. IF ODT-B IS NOT USED. ADD JUMPER BETWEEN W2 & W3 AT AIR HANDLER. IF USED, ODT-B MUST BE MOUNTED REMOTE OF CONTROL BOX IN AN APPROVED WEATHER PROOF ENCLOSURE.
2. IF ODT-A IS NOT USED. ADD JUMPER BETWEEN W1 & W2 AT AIR HANDLER.
3. LOW VOLTAGE (24 V) FIELD WIRING MUST BE 18 AWG MIN.
4. NOT FACTORY INSTALLED ON MODELS 4\*\*M3042 & 48, IF NEEDED ON THESE MODELS, USE BAYKSKT 263.
5. NOT USED ON ALL THE MODELS

FOR CANADIAN INSTALLATIONS  
POUR INSTALLATIONS CANADIENNES

CAUTION: NOT SUITABLE FOR USE ON SYSTEMS EXCEEDING 150V-TO-GROUND  
ATTENTION: NE CONVIENT PAS AUX INSTALLATIONS DE PLUS DE 150 V A LA TERRE





# Mechanical Specification Options

## General

The 4TTM3 is fully charged from the factory for up to 15 feet of piping for the smallest rated combination. Other combinations will require additional charge. This unit must be applied with a TXV equipped indoor unit.

This unit is designed to operate at outdoor ambient temperatures as high as 115°F. Cooling capacities are matched with a wide selection of air handlers and furnace coils that are A.H.R.I. certified. The unit is certified to UL 1995. Exterior is designed for outdoor application.

## Manual Charge Assist™

A Trane exclusive, the manual charge assist helps ensure the proper refrigerant charge, providing ideal performance and efficiency.

## Casing

The unit is constructed of heavy gauge, G90 galvanized steel and painted with a weather-resistant powder paint on the top, base & coil guard, prepaint on all other panels.

## Refrigerant Controls

Refrigeration system controls include condenser fan, compressor contactor and high pressure switch. High and low pressure controls are inherent to the compressor. A field installed liquid line drier is shipped with the unit.

## Compressor

The Climatuff® compressor features internal over temperature and pressure protection and total dipped hermetic motor.

## Time Delay Relay

The time delay relay prevents compressor short cycling and improves startability and reliability.

## Condenser Coil

The outdoor coil provides low airflow resistance and efficient heat transfer.

## Low Ambient Cooling

As manufactured, this unit has a cooling capability to 60°F. The addition of an evaporator defrost control permits low ambient cooling to 30° F. The addition of a low ambient kit allows operation down to 0° F.

## Accessories

**Thermostats** — Cooling only and heat/cooling (manual and automatic change-over). Sub-base to match thermostat and locking thermostat cover.

**Evaporator Defrost Control** — See Low Ambient Cooling.





**TRANE®**

Trane  
[www.trane.com](http://www.trane.com)

05/12

*Trane has a policy of continuous product and product data improvement **and** it reserves the right to change design and specifications without notice.*